

# PUMP CHAMBER

## CAT# SEP2000PUMP

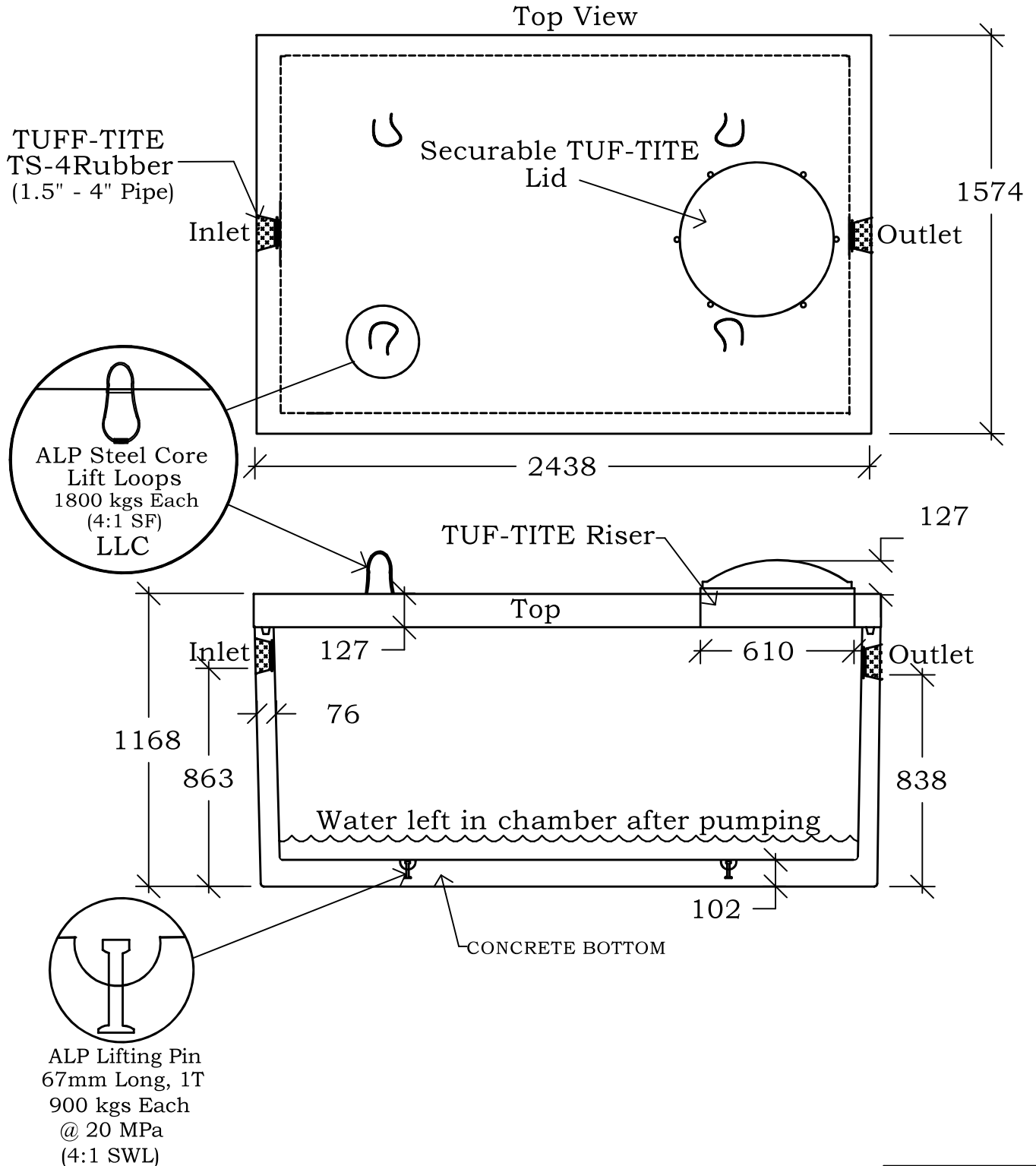
**VJRICE**  
**CONCRETE**  
**LIMITED**

Phone:(902)665-4444  
 Fax: (902)665-4017  
 P.O Box 399, Bridgetown  
 Nova Scotia, B0S 1C0

CAPACITY: 2000L [450 GAL]

WEIGHT: Bottom-2110 kgs, Top-1050 kgs

ADDITIONAL PARTS: TUF-TITE RISER & COVER



Tank to be sealed with CONSEAL CS-102 Butyl Sealant.

**SEP-10**