

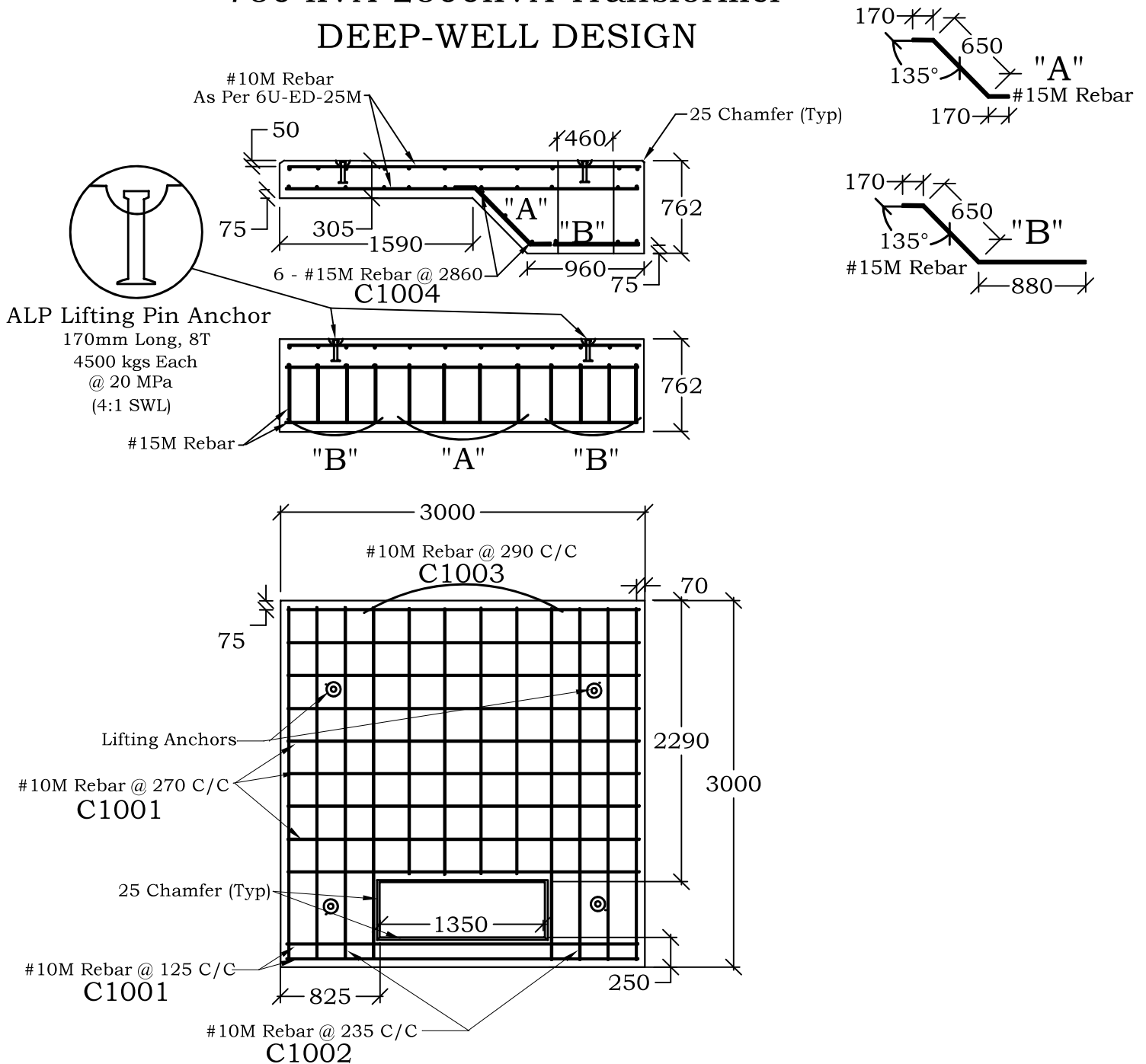
# Transformer Pad 750kVA - 2500kVA

## Catalog# TRANS-3030DW



Phone:(902)665-4444  
 Fax: (902)665-4017  
 P.O Box 399, Bridgetown  
 Nova Scotia, B0S 1C0  
 www.riceconcrete.ca

### 750 kVA-2500kVA Transformer DEEP-WELL DESIGN



Section Weight:  
Slab - 9300 kgs

### Structural Notes:

- Min. 30MPa concrete @ 28 days, in all sections.
- Reinforcing placement as per NSP 6U-ED-26M & 6U-ED-25M
- In accordance with CAN/CSA A257 (Latest Edition)
- Reinf steel shall be GR 400, conforms to CAN/CSA G30.18(Latest Edition)
- Concrete: As per CAN/CSA A23.1(Latest Edition)
- Concrete curing shall conform with CAN/CSA A23.1 (Latest Edition)