

SEPTIC TANK

CATALOG#SEP4800-2C/TT

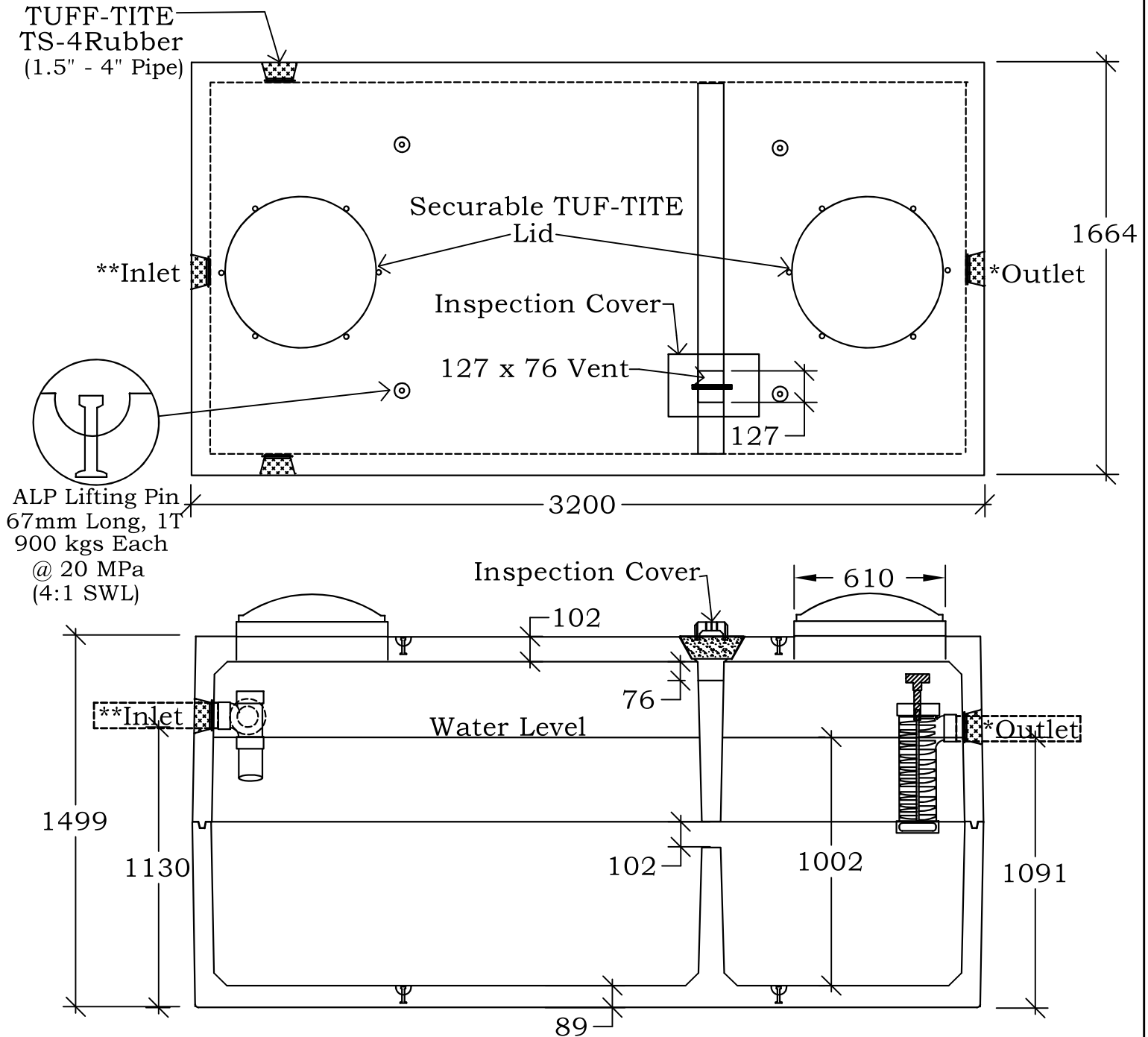
VJ RICE
CONCRETE
LIMITED

Phone:(902)665-4444
 Fax: (902)665-4017
 P.O Box 399, Bridgetown
 Nova Scotia, B0S 1C0
 www.riceconcrete.ca

CAPACITY: 4800L [1056 GAL] TWO COMPARTMENT

WEIGHT: Top-5500 lbs, Bottom-5425 lbs

ADDITIONAL PARTS:TB-6 FILTER, RISER, COVER, TEE HANDLE



NOTES:

- Tank to be sealed with CONSEAL CS-102 Butyl Sealant.
- * Effluent filter required at outlet end.
- ** Tee required at inlet end.

SEP-4c