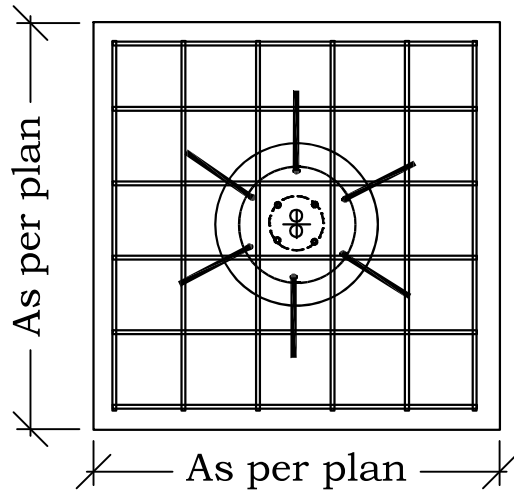


Light Standard Foundation w/Base

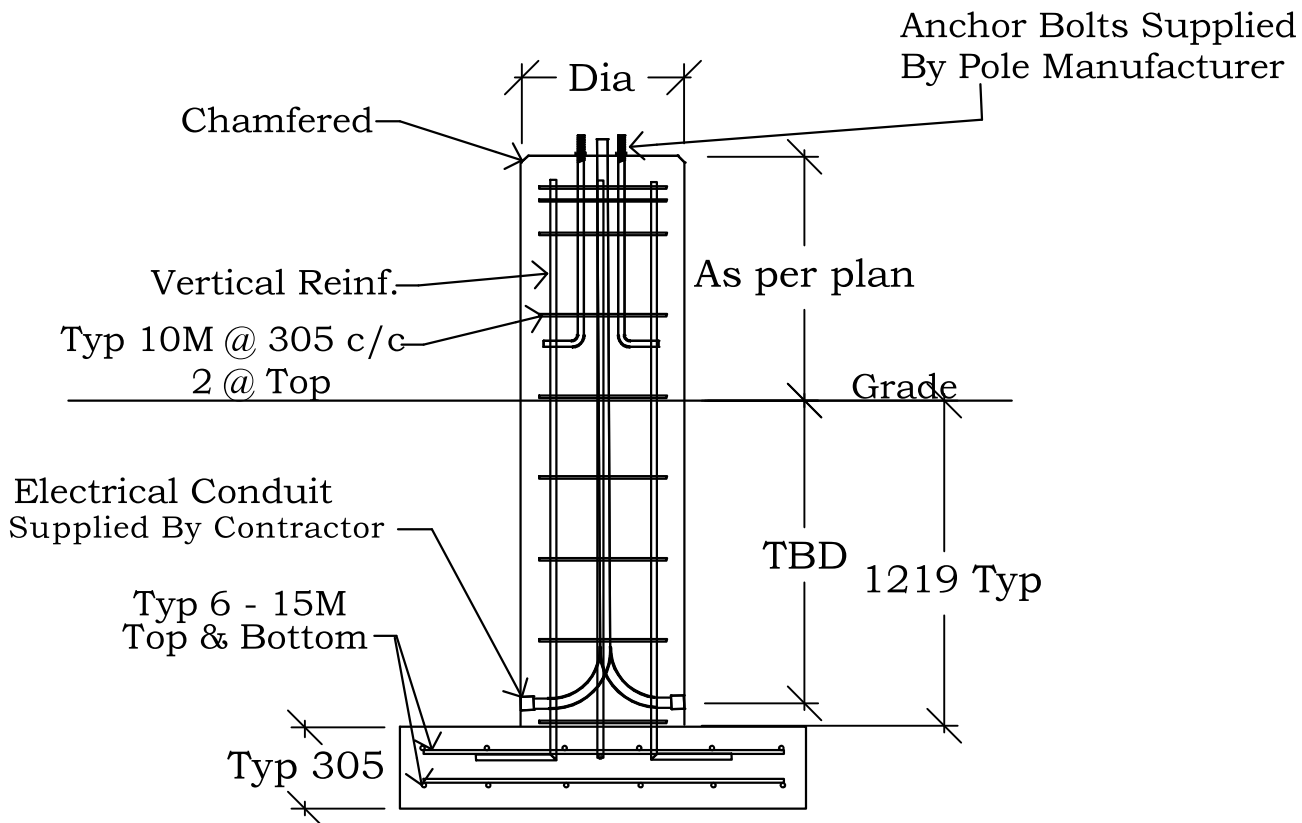
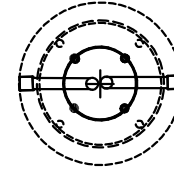
Catalog# LAMP BASE



Phone: (902)665-4444
 Fax: (902)665-4017
 P.O. Box 399, Bridgetown
 Nova Scotia, B0S 1C0
 www.riceconcrete.ca



Bolt Circle & Conduit Configuration
 Supplied By Contractor



Height & size of post and base, as well as rebar size and configuration are specific to each project.

Structural Notes:

- Reinforcement: As per specifications. TYP - 10m Bar @ 305mm (Hor), (6) 25m Bar (Ver), 15m Base Slab
- Min 35 MPa Min (5075 psi) @ 28 days
- Minimum Concrete Cover: 50mm
- Top Edge Chamfered